



HELVET GREEN

GOLF & LIVING RESIDENCES

LOCATION

Mijas, Málaga

Located in the heart of the Costa del Sol, Mijas perfectly combines the traditional Andalusian charm of its famous white village with a contemporary and exclusive atmosphere. Its cobbled streets, whitewashed facades, and cascading flowers embody the authentic Andalusian spirit, while its amenities, golf courses, sports clubs, and cultural attractions ensure a comfortable and vibrant lifestyle all year round.

Mijas stretches from the mountains to the coast, offering breathtaking views of the Mediterranean and the surrounding peaks, along with a wide variety of beaches, coves, and promenades. Its advantageous location between Malaga and Marbella provides easy access to urban centers, international airports, and major shopping areas, harmonizing serenity with connectivity.



PROJECT

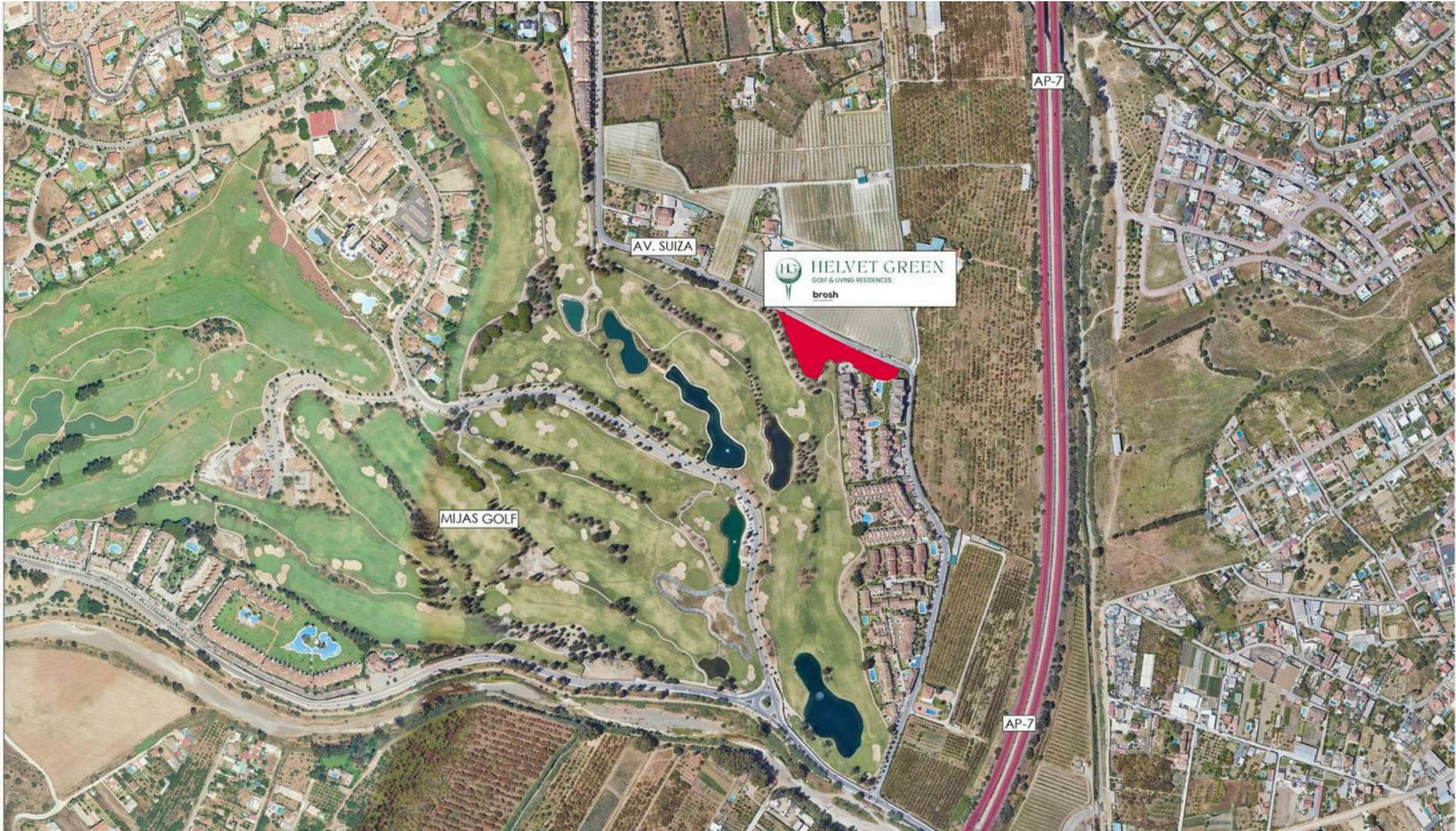
An exclusive development of **103 homes on the Costa del Sol**, designed for people who prioritize comfort, light, and space in a natural setting. The homes, ranging from **one to three bedrooms**, are characterized by their spacious layouts, abundant natural light, and top-quality finishes, providing an ideal balance between functionality and elegance.

The complex has spacious **common areas** designed for wellness and leisure, perfect for enjoying time with family or friends.



LOCATION MAP

Located next to a **golf** course and surrounded by nature, they offer a peaceful setting with excellent connections to Mijas, Fuengirola, and the city of Málaga.



LAYOUT OF THE GROUND FLOOR

DESIGN

- **Architectural design:** A staggered layout that prioritizes privacy while offering expansive views of the natural landscape and golf course.

COMMON SPACES

- **Central swimming** pool with an irregular design, perfectly integrated with the landscaped areas and solarium.
- The **children's area**, adjacent to the relaxation areas, is designed for the enjoyment of the whole family.
- **Spacious green areas** with footpaths and communal meeting areas.
- Indoor and outdoor **communal areas** for social and recreational activities.
- Landscape design that integrates native vegetation with open spaces, promoting sustainability and climate resilience.

Access and Connectivity

- Main entrance with **controlled access** for both pedestrians and vehicles.
- **Direct access** to the main road and proximity to local amenities.
- Strategically located **underground parking**.







FLOOR PLAN

Type: Two Bedrooms



VT 2.10a 2 dormitorios

2 dormitorios

RESUMEN SUPERFICIES ÚTILES

Total superficie útil interior	60.87 m²
Total superficie útil exterior	14.27 m²
Total superficie útil vivienda	75.14 m²

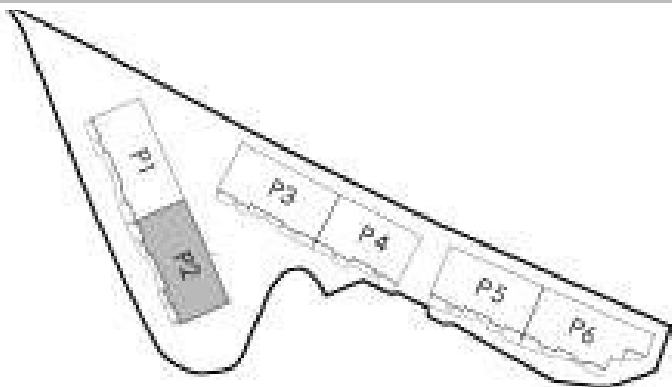
RESUMEN SUPERFICIES CONSTRUIDAS

Total superficie construida interior	70.99 m²
Total superficie construida exterior	15.54 m²
Total superficie construida vivienda	86.53 m²

Total superficie construida con comunes	99.16 m²
---	----------

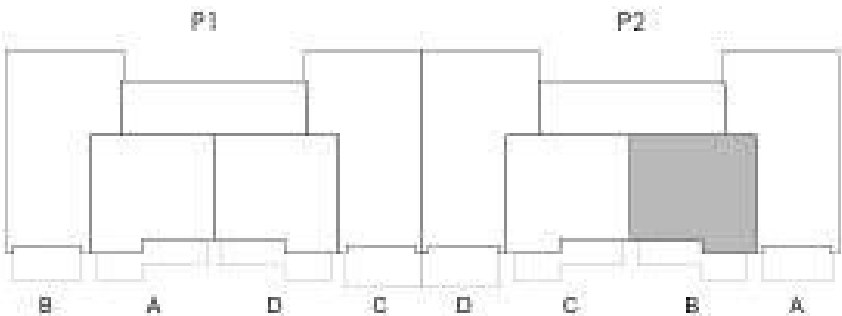
RESUMEN SUPERFICIES SEGÚN DECRETO 218/2005

Superficie útil BOJA	66.96 m²
Superficie construida BOJA	86.57 m²



LOCALIZACIÓN

Planta Primera





FLOOR PLAN

Type: Three Bedrooms



VT 3.15 3 dormitorios

RESUMEN SUPERFICIES ÚTILES

Total superficie útil interior	85.11 m²
Total superficie útil exterior	15.33 m²
Total superficie útil vivienda	100.44 m²

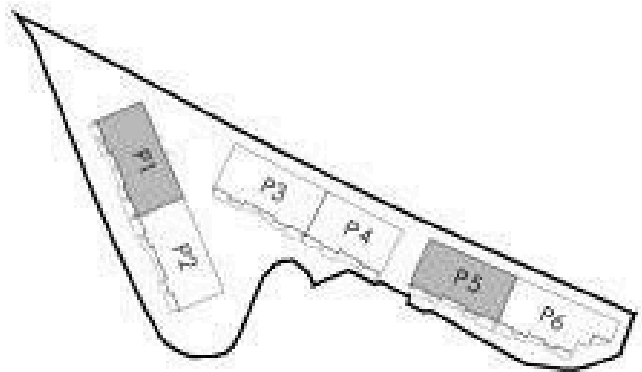
RESUMEN SUPERFICIES CONSTRUIDAS

Total superficie construida interior	99.19 m²
Total superficie construida exterior	16.36 m²
Total superficie construida vivienda	115.55 m²

Total superficie construida con comunes	132.76 m²
---	-----------

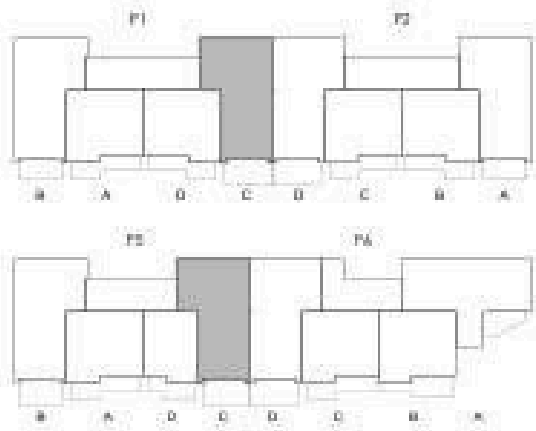
RESUMEN SUPERFICIES SEGÚN DECRETO 218/2005

Superficie útil BOJA	92.78 m²
Superficie construida BOJA	117.65 m²



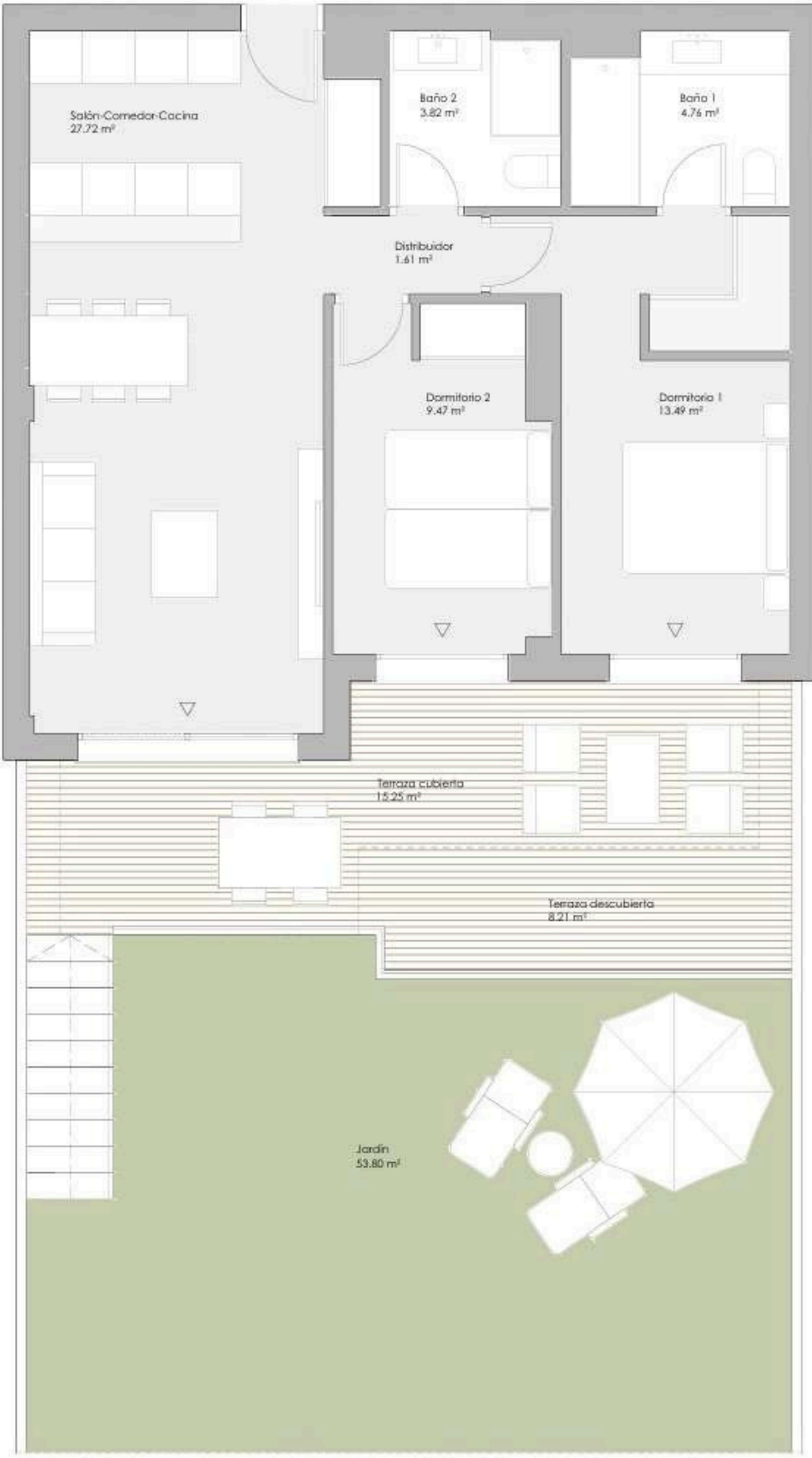
LOCALIZACIÓN

Planta Primera y Segunda





FLOOR PLAN



VT 2.1 2 dormitorios

2 dormitorios

RESUMEN SUPERFICIES ÚTILES

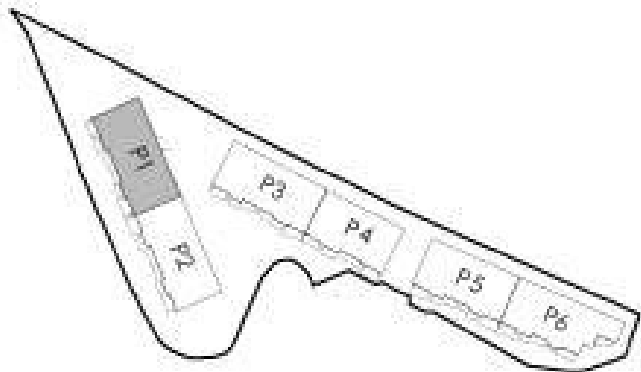
Total superficie útil interior	60.87 m²
Total superficie útil exterior	77.26 m²
Total superficie útil vivienda	138.13 m²

RESUMEN SUPERFICIES CONSTRUIDAS

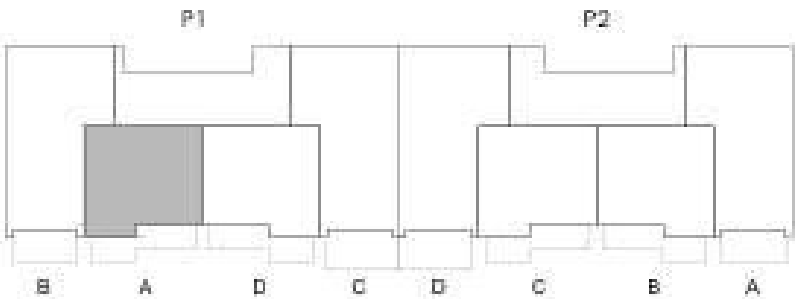
Total superficie construida interior	70.99 m²
Total superficie construida exterior	82.54 m²
Total superficie construida vivienda	153.53 m²
Total superficie construida con comunes	166.41 m²

RESUMEN SUPERFICIES SEGÚN DECRETO 218/2005

Superficie útil BOJA	66.96 m²
Superficie construida BOJA	90.97 m²



LOCALIZACIÓN
Planta Baja





FLOOR PLAN

Penthouse apartment



VT 3.37 3 dormitorios

RESUMEN SUPERFICIES ÚTILES

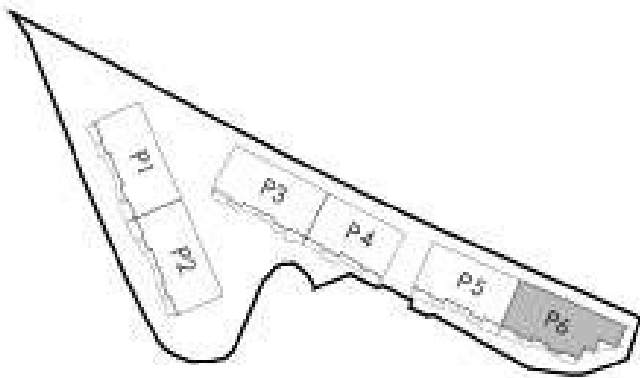
Total superficie útil interior	105.69 m²
Total superficie útil exterior	199.90 m²
Total superficie útil vivienda	305.59 m²

RESUMEN SUPERFICIES CONSTRUIDAS

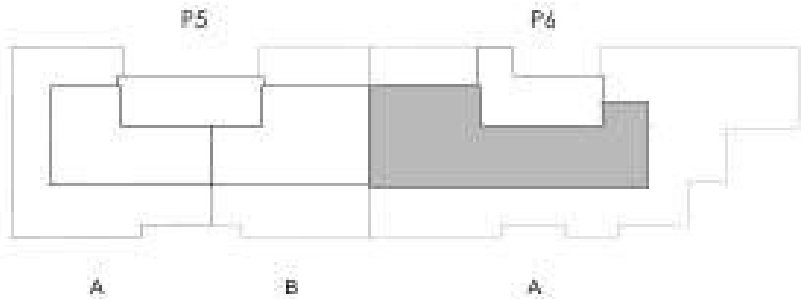
Total superficie construida interior	127.27 m²
Total superficie construida exterior	221.09 m²
Total superficie construida vivienda	348.36 m²
Total superficie construida con comunes	367.31 m²

RESUMEN SUPERFICIES SEGÚN DECRETO 218/2005

Superficie útil BOJA	116.26 m²
Superficie construida BOJA	158.95 m²



LOCALIZACIÓN
Planta Ático







HELVET GREEN

GOLF & LIVING RESIDENCES
