



**EXPAT  
HOUSING  
LIMBURG**

**FOR SALE:**

**2 newly renovated  
apartments  
Schoenmakerstraat 15  
Roermond**





*Feeling at home*  
**IN LIMBURG**

# TABLE OF CONTENTS

---

INTRODUCTION . . . . .	04	INTERIOR PACKAGE . . . . .	12
LIVING IN THE CENTRE OF ROERMOND...	05	SANITARY WARE . . . . .	14
APARTEMENT 15B . . . . .	08	PARKING . . . . .	15
APARTEMENT 15C . . . . .	10	CONTACT . . . . .	16

---





#### EXPAT HOUSING LIMBURG:

WE THINK IT IS  
IMPORTANT THAT  
YOU FIND THE  
APARTMENT THAT  
SUITS YOUR NEEDS.

Expat Housing Limburg continuously offers a varied selection of furnished apartments and studios in the vibrant heart of Roermond and the nature-rich center of Swalmen. We listen carefully to the specific housing needs of expats and match these not only with a wide range of buy and rental apartments but also with optional extras such as a parking space, furniture package, good Wi-Fi, car leasing, cleaning services, and more. Our goal is to make expats feel at home, not only in our properties but also in our region. For this reason, 'The Expat Club' was established.

More information can be found on the website:

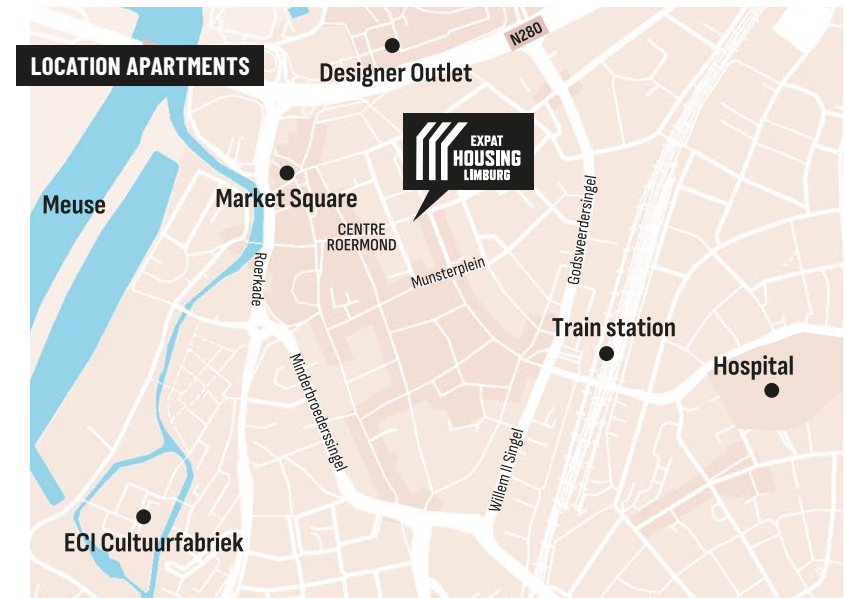
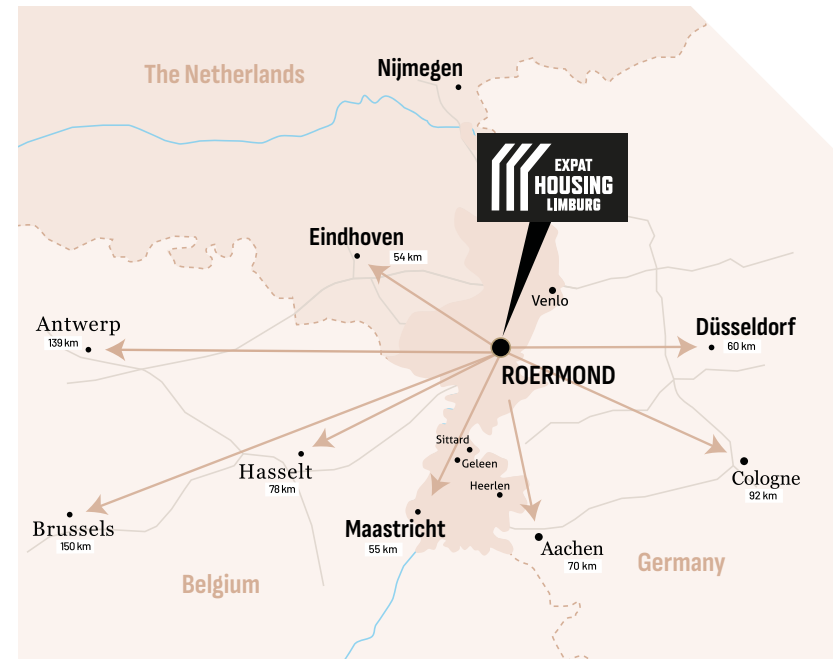
**[www.expathousinglimburg.nl](http://www.expathousinglimburg.nl)**

---

# LIVING IN THE CENTRE OF ROERMOND

Roermond combines modern city life with the charm of a historic city center. Located in the south of the Netherlands, the city is easily accessible both nationally and internationally. The train station is within short distance, allowing you to reach Eindhoven or Maastricht in no time. This central location makes Roermond the ideal base for both work and leisure.

The city offers a wide range of urban amenities, from high-end shops to cozy restaurants and charming terraces. In addition, Roermond is known for its cultural diversity and vibrant events, while you can still enjoy peace and quiet, with lots of nature and the Maasplassen just a few minutes away.





AUTHENTIC AND  
MODERN LIVING  
IN THE HEART  
OF ROERMOND.



*Front facade*

## SCHOENMAKERSSTRAAT

Details about the commercial (retail) space with apartment are not included in this brochure and are provided separately. For more information please make an appointment or schedule a viewing.



*Streetview*





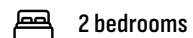
## *LIGHT & MODERN*

Stylish newly renovated apartments in  
an authentic building, combining modern  
comfort with historic charm.

*Impression living room apartment 15B*

# Apartement 15B

## FIRST FLOOR



2 bedrooms

Energy label: A



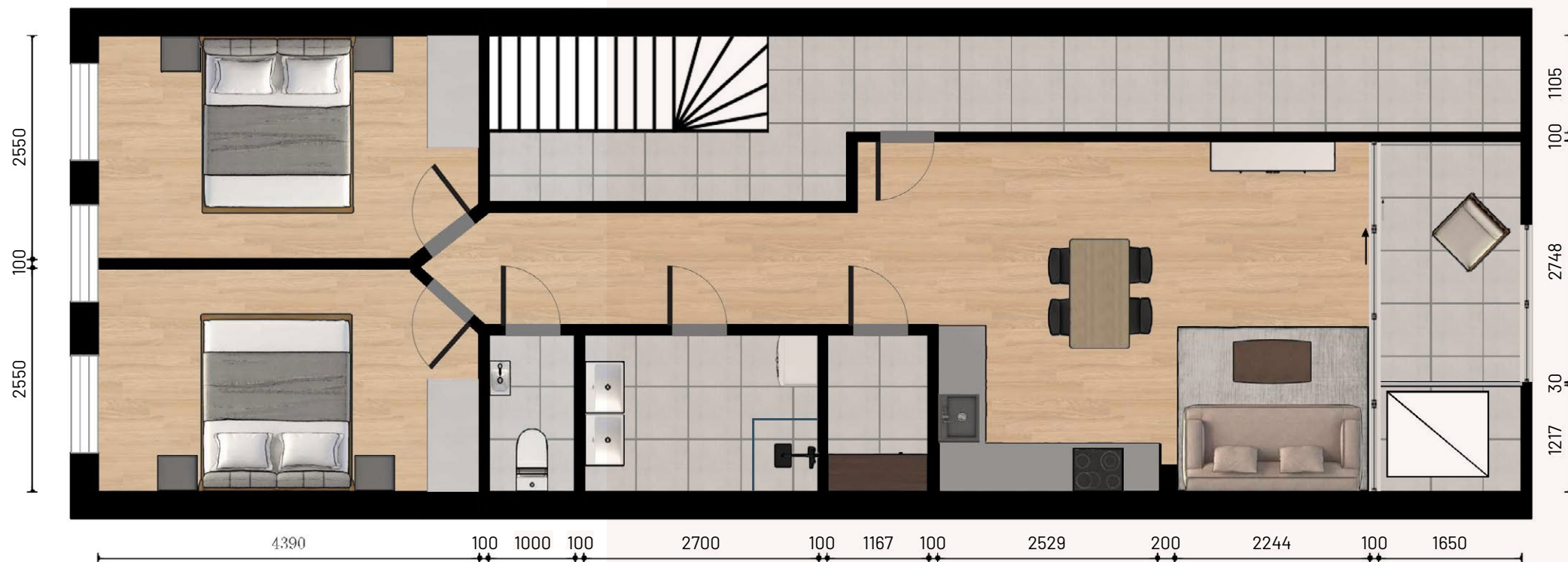
1 bathroom

Surface area:  $\pm 60 \text{ m}^2$

Outdoor patio:  $\pm 8 \text{ m}^2$

### OTHER FEATURES:

- Spacious layout
- Open kitchen with appliances
- Separate toilet
- Private, cozy patio
- Finished to a high standard and including window coverings and flooring.
- Option: Parking space
- Option: furniture package







*Impression bedroom apartment 15B*

# Apartement 15C

## SECOND FLOOR



2 bedrooms

Energy label: A

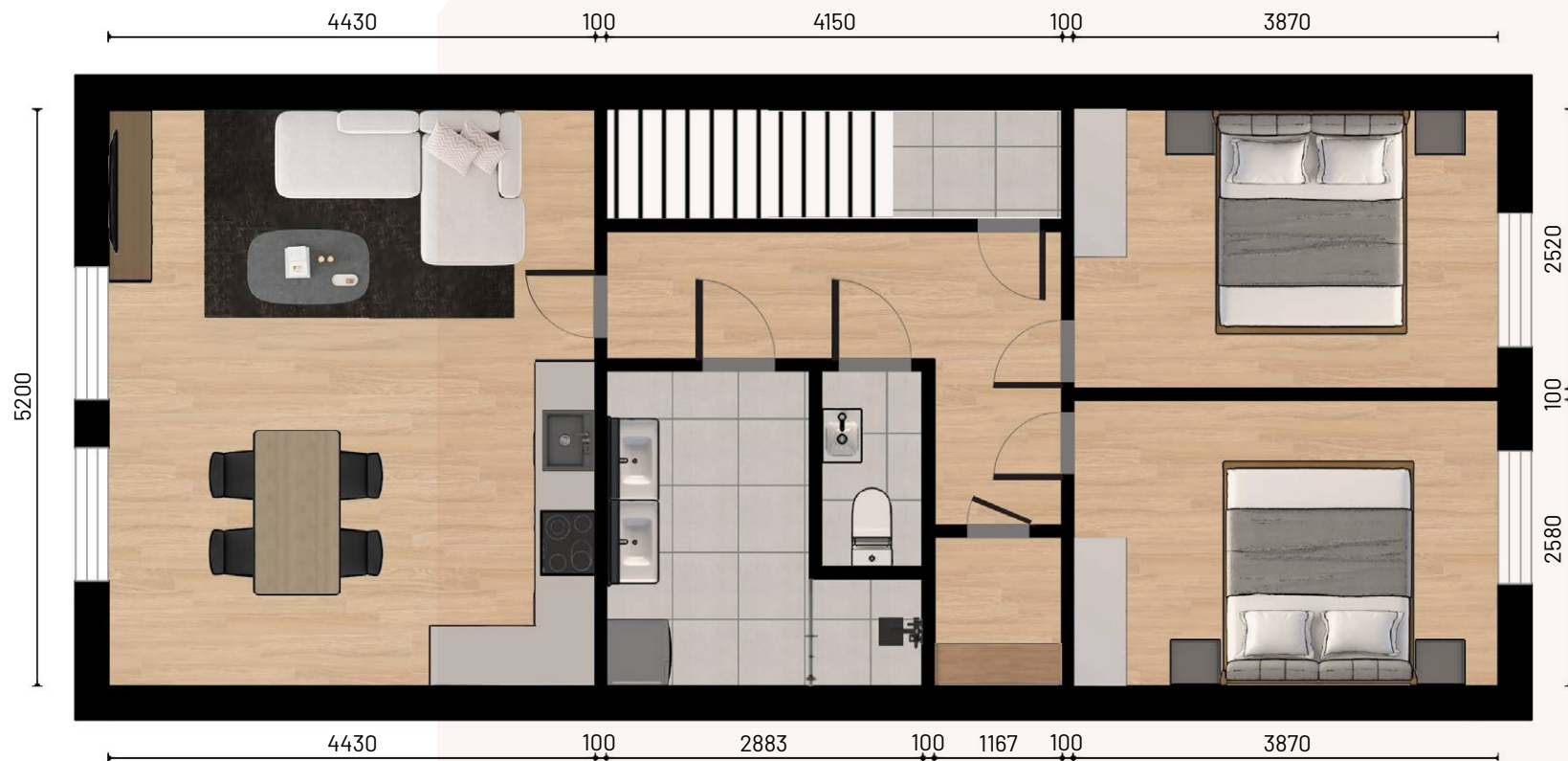


1 bathroom

Surface area: ± 60 m²

### OTHER FEATURES:

- Spacious layout
- Open kitchen with appliances
- Separate toilet
- Utility room
- Finished to a high standard and including window coverings and flooring.
- Option: Parking space
- Option: furniture package







*Impression living room apartment 15C*



## INTERIOR LIGHT & PRACTICAL

The living room is filled with natural light, creating a fresh and homely ambiance. The open and fully equipped kitchen with built-in appliances adds extra convenience. Additionally, there is an option to purchase a furniture package, allowing you to move in effortlessly and enjoy your new apartment without worries.

---



*Impression bedroom apartment 15B*





## VISIT THE MODEL APARTMENT

A special model apartment has been set up specifically for these newly built apartments – located right next door at Schoenmakersstraat 13C. This model reflects the level of finishes, interior design, and furniture package of the apartments at Schoenmakersstraat 15.

*Schedule a viewing today and visit the model apartment to get a true impression of the quality and style offered.*



*Impression bedroom apartment 15C*

## SANITARY WARE COMFORT & STYLE

Each apartment features stylish basic sanitary fittings. The bathroom is equipped with a modern shower, and a separate toilet is included. The sanitary design perfectly complements the apartment's contemporary look.



*Impression bathroom apartment 15C*



*Impression bathroom apartment 15B*



## OPTIONAL FOR SALE

# PRIVATE PARKING

Enjoy the comfort of having your own secure parking space just steps from your home in the city center. Several locations and flexible pricing options are available—reach out to explore what suits you best.

---





## **SALES & INFORMATION:**

---

### **Expat Housing Limburg**

[sales@expathousinglimburg.nl](mailto:sales@expathousinglimburg.nl)

Tel. +31 (0)6 11 16 52 92

[www.expathousinglimburg.nl](http://www.expathousinglimburg.nl)

---



**DISCLAIMER:**

This brochure is intended to provide an impression of the available apartments. No rights can be derived from it. The included floor plans are impressions. The interiors are a free interpretation of the architect and may differ from the standard finishing level. Interior design, kitchens, flooring, upholstery, furniture, plants, etc., are not included in the price as standard.

© 2025 *Expat Housing Limburg*

